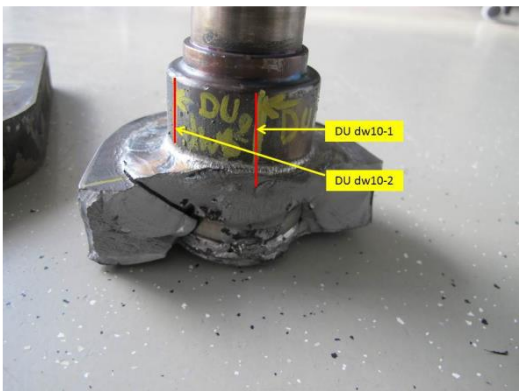


PIT vs. TIG dressing on a steering arm for agricultural machinery

This project clearly shows the better effect of a PIT treatment compared to TIG post-treatment (TIG dressing)

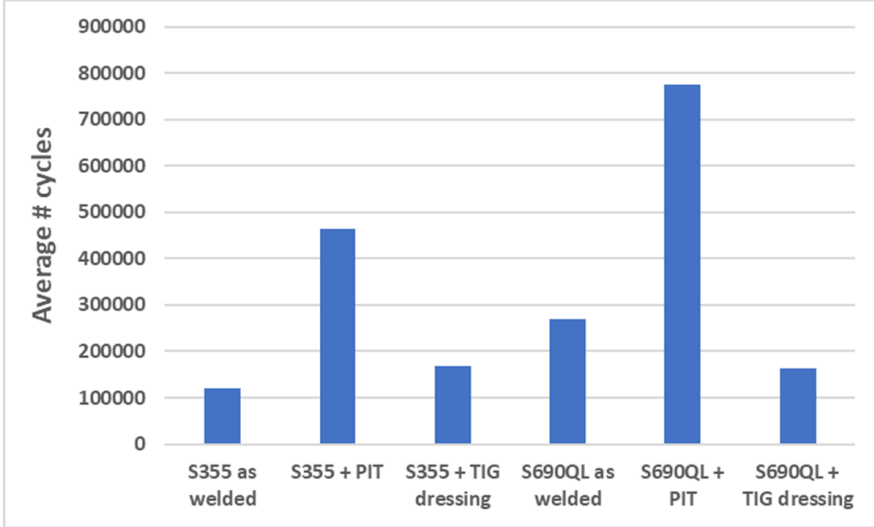
without PIT the crack occurs directly at the weld toe.



OCAS N.V.


R&D Projekt Durimprove

after the PIT treatment, a significantly later transition of WEZ



Condition	Average # cycles
S355 as welded	120.104
S355 + PIT	464.844
S355 + TIG dressing	169.276
S690QL as welded	270.663
S690QL + PIT	776.133
S690QL + TIG dressing	163.648